

#insight

# Discom wise Projected Power Sales & Annual Revenue Requirement in Odisha for FY 2024-25

#insight

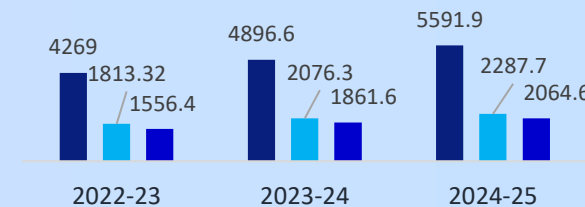
01

## Estimated sales of Odisha Discoms for FY 2024-25

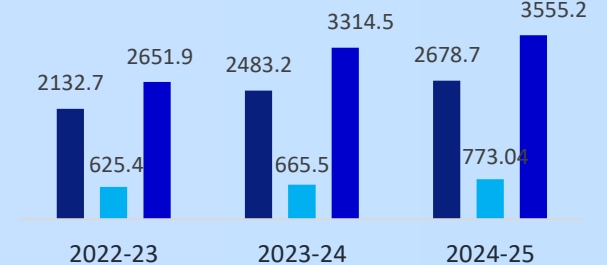
TPWODL has projected the consumption of different categories based on past trends and consumption pattern for first six months of FY 2023-24, actual addition/reduction of loads and other important aspect of market condition

The growth in the domestic category has been estimated at 5.64% during FY 2024-25. The reason of higher consumption in Domestic sector is on account of replacement of defective meters and electro-mechanical meters in the consumer premises as well as installation of new meters where consumers were availing power supply without meter. The growth in the sales of other categories in the LT sector has been estimated in the range of 6% during FY 2024-25 considering the past trends except Irrigation & Pumping category of consumers where growth of 9% has been taken up

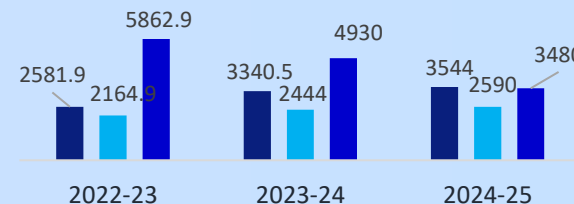
Sales Forecast for Discoms in TPCODL



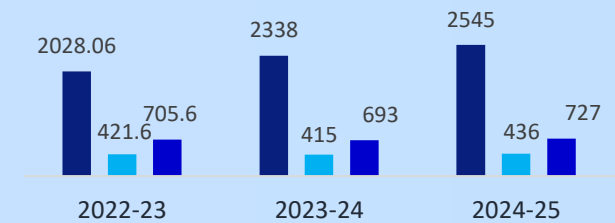
Sales Forecast for Discoms in TPNODL



Sales Forecast for Discoms in TPWODL



Sales Forecast for Discoms in TPSODL



Source: TPCODL, TPNODL, TPWODL, TPSODL, Eninrac

powered by why



The cumulative power purchase cost of all four discoms in Odisha is estimated to be INR 12903.6 crores

The power purchase costs is based on consumer load mix, consumption patterns and other economic policies, current BSP, transmission charges and SLDC charges

Table I Proposed SMD and Power Purchase Cost for FY2024-25						
Discoms	Est. Power Purchase in MU	Estimated Sales (MU)	Distribution Loss (%)	Current BSP (Paise/Unit)	Estimated Power Purchase Cost (INR Crore) including Transmission & SLDC Charges	SMD Proposed MVA
TPCODL	12305.84	9944.3	19.19	305	4050	2568
TPNODL	8161.08	7007.1	14.14	335	2930.9	1400
TPWODL	11524	9614.1	16.57	390	4770.6	1850
TPSODL	4917.5	3708	24.6	210	1151.4	862

Source: TPCODL, TPNODL,TPWODL,TPSODL, Eninrac

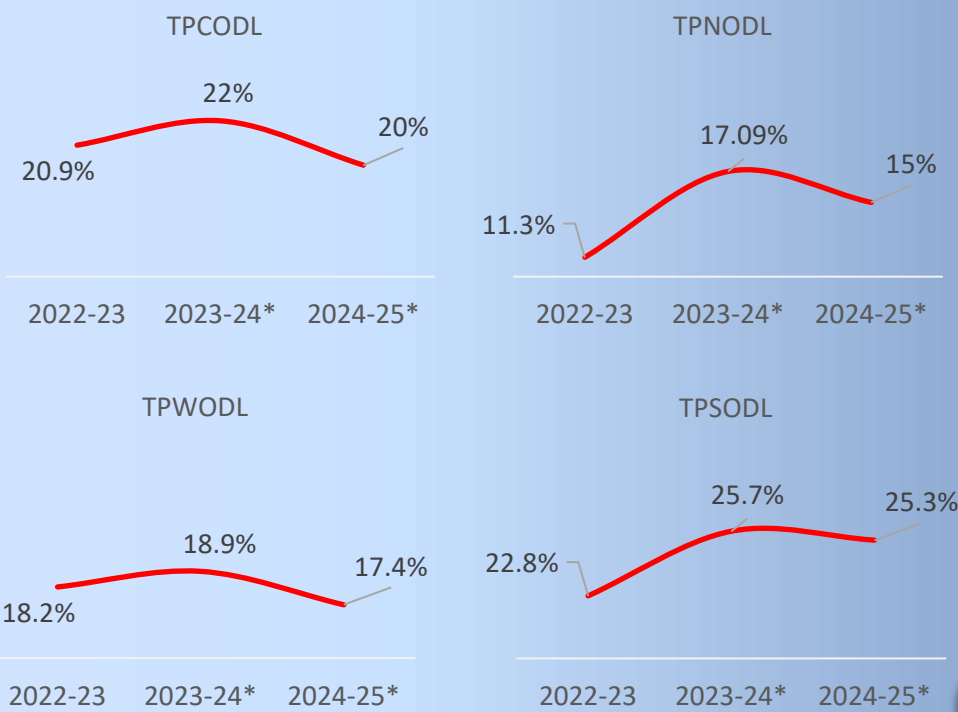
#insight

02

Summary of Power Purchase Cost Estimated

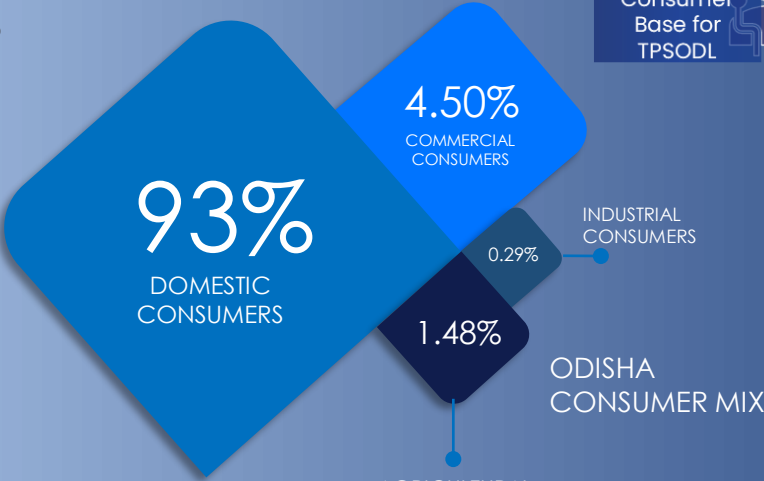
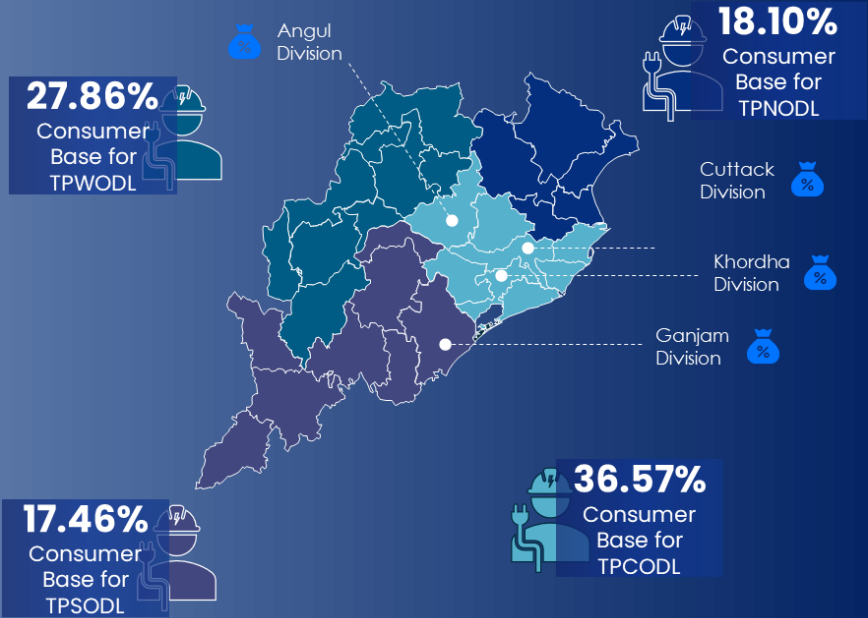
# Key Facts of Discoms in Odisha

**AT&C loss (%) Proposed by Discoms in Odisha for FY'2023-24 & FY'2024-25**



## State wise Analysis Eastern Region – Odisha

- DU1 – Tata Power Northern Odisha Distribution Limited (TPNODL)
- DU2 – Tata Power Central Odisha Distribution Limited (TPCODL)
- DU3 - Tata Power Southern Odisha Distribution Limited (TPSODL)
- DU4 - Tata Power Western Odisha Distribution Limited (TPWODL)



Source: Eninrac Report, “ Feasibility & Indexation of Discoms Viable for Privatization in India, TPCODL, TPNODL,TPWODL,TPSODL



**The Licensees in Odisha have estimated the revenue from sale of power by considering the sales projected for FY 2024-25 and by applying various components of existing tariffs**

The total revenue based on the existing tariffs applicable for the projected sales is estimated at INR 5814.35 Cr, INR 4048.92Cr, INR 5751.16 Cr and INR 2077.00Cr by TPCODL, TPNODL, TPWODL and TPSODL, respectively.

**Table II: Proposed Revenue Requirement of DISCOMs for the FY 2024-25 (In Crores)**

S.No	Particulars	TPCODL	TPNODL	TPWODL	TPSODL	Total
<b>A</b>	<b>Total Power Purchase, Transmission &amp; SLDC Cost</b>	<b>4050.46</b>	<b>2930.99</b>	<b>4770.69</b>	<b>1151.46</b>	<b>12903.6</b>
1	Employee Expenses	856.19	532.72	606.50	419.50	2414.91
2	A&G Expenses	233.91	134.40	245.87	191.40	805.58
3	R&M Expenses	357.82	321.45	336.86	254.00	1270.13
4	Provision for Bad & Doubtful Debt	58.14	40.49	57.51	20.77	176.91
5	Depreciation	137.77	97.29	125.98	99.03	460.07
6	Interest Expenses	213.66	176.98	184.58	100.50	675.72
7	Return on Equity	118.93	102.54	135.42	90.26	447.15
8	Tax on ROE	40	34.49	45.55	30.36	150.4
<b>B</b>	<b>Total Distribution Cost</b>	<b>2016.42</b>	<b>1440.36</b>	<b>1738.27</b>	<b>1205.82</b>	<b>6400.87</b>
<b>C</b>	<b>Total Special Appropriation</b>		<b>9.24</b>	<b>0.59</b>		<b>9.83</b>
<b>D</b>	<b>Total expenditure including special appropriation (B+C)</b>	<b>2016.42</b>	<b>1449.60</b>	<b>1738.87</b>	<b>1205.82</b>	<b>6410.7</b>
<b>E</b>	<b>Less: Miscellaneous Receipt</b>	<b>114</b>	<b>207.3</b>	<b>386.02</b>	<b>54.6</b>	<b>761.9</b>
<b>F</b>	<b>Net Distribution Cost (D-E)</b>	<b>1902.4</b>	<b>1242.2</b>	<b>1352.8</b>	<b>1151.2</b>	<b>5648.7</b>

Source: TPCODL, TPNODL, TPWODL, TPSODL, Eninrac

#insight

03

**Proposed Revenue Requirement Estimation for Odisha**

#insight

# 03

## Proposed Revenue Requirement Estimation for Odisha (Contd.)

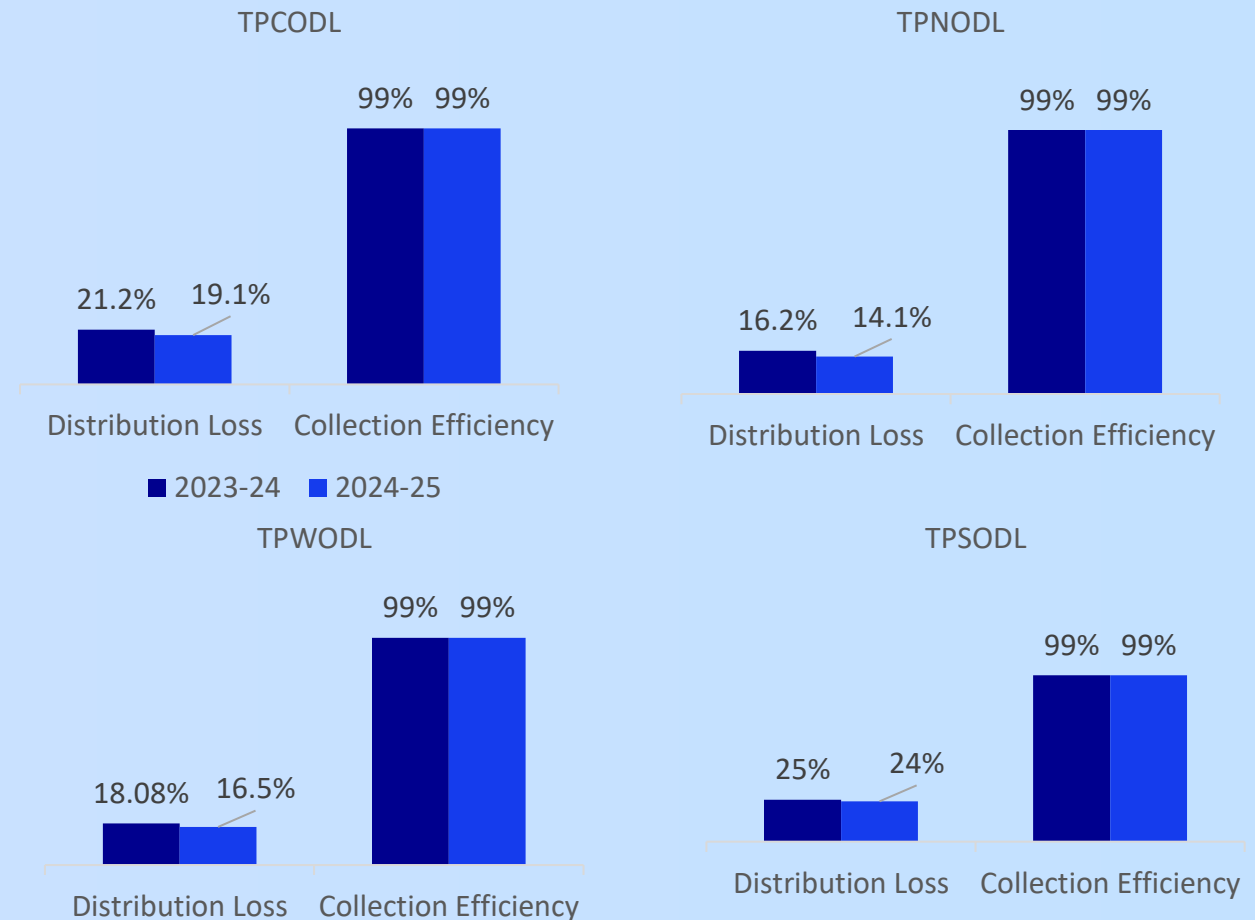
Table II: Proposed Revenue Requirement of DISCOMs for the FY 2024-25 (In Crores)- Contd.						
S.No	Particulars	TPCODL	TPNODL	TPWODL	TPSODL	Total
G	Total Revenue Requirement (A+F)	5952.8	4173.2	6123.5	2302.6	18552.3
H	Expected Revenue at Existing Tariff	5814.3	4048.9	5751.1	2077	17691.4
I	Less: Surplus carried over from past true ups	-	-	371.1	-	371.1
J	(GAP)/ Surplus (G-H-I)	(138.54)	(124.33)	(1.26)	(255.6)	(489.7)
K	Recovery of ASL	32.8	-	-	-	32.89
L	Net (GAP)/ Surplus	(171.43)	(124.33)	(1.26)	(225.66)	(522.6)

Source: TPCODL, TPNODL,TPWODL,TPSODL, Eninrac

#insight

04

## Distribution Loss & Collection Efficiency of Discoms in Odisha



Source: TPCODL, TPNODL, TPWODL, TPSODL, Eninrac

WANT SPECIFIC MARKET STORY?  
**WRITE OR CALL TO US**

---

at [connect@eninrac.com](mailto:connect@eninrac.com)  
+91 93190 48963/47963, +91 72900 16953